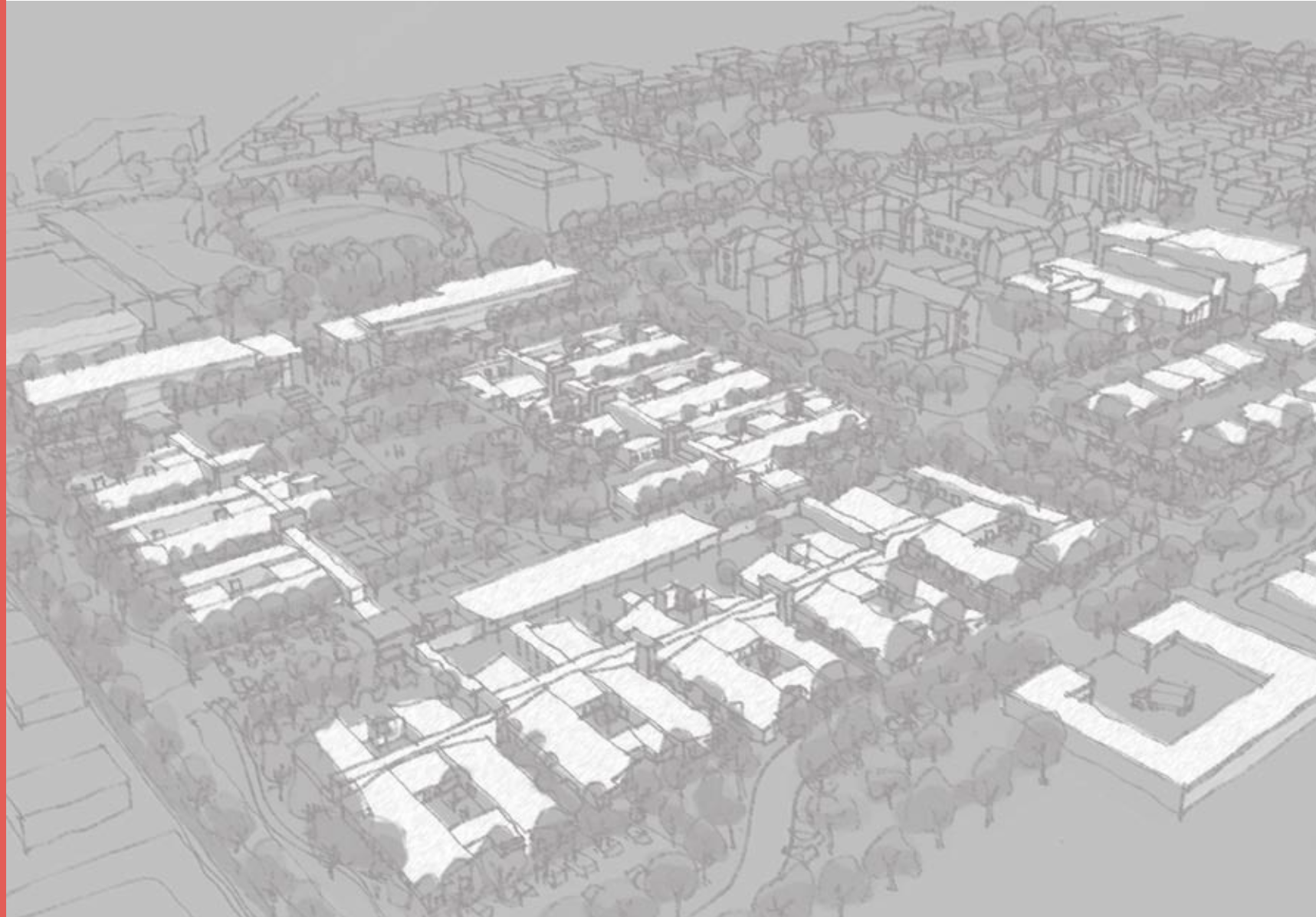


# New Glenside Health Facilities SA Health Design Overview

July 2013



Medical  
Architecture



swanbury penglase  
architects of human space

# The Glenside Campus



Heritage Listed Building



Existing Boundary Treatment



Existing Mortuary - Heritage Listed

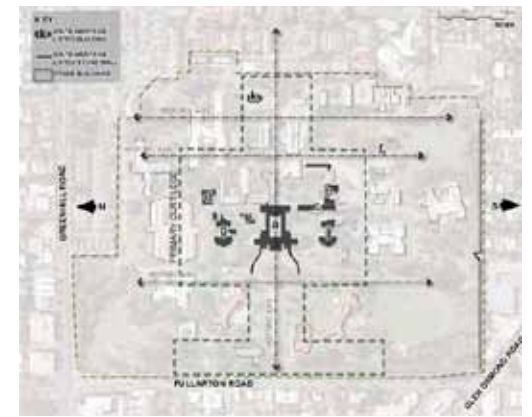


South Australia is currently undertaking a major reform of its mental health care to modernise and improve mental health services across the state. In 2005 the Social Inclusion Board prepared a report on the State's mental health system, including recommendations to improve the way services are delivered for people with a mental illness, their families and carers. At the heart of the reforms is a stepped model of care. The reform will ensure people have access to the appropriate level of support when they need it most and closer to where they live.

As a result the State Government is investing more than AUD\$300M to create modern mental health and substance abuse services to better support South Australian individuals and families. The Glenside Campus redevelopment is a major step towards providing these improved services across South Australia.



Glenside Campus Masterplan



State Heritage Listed Buildings



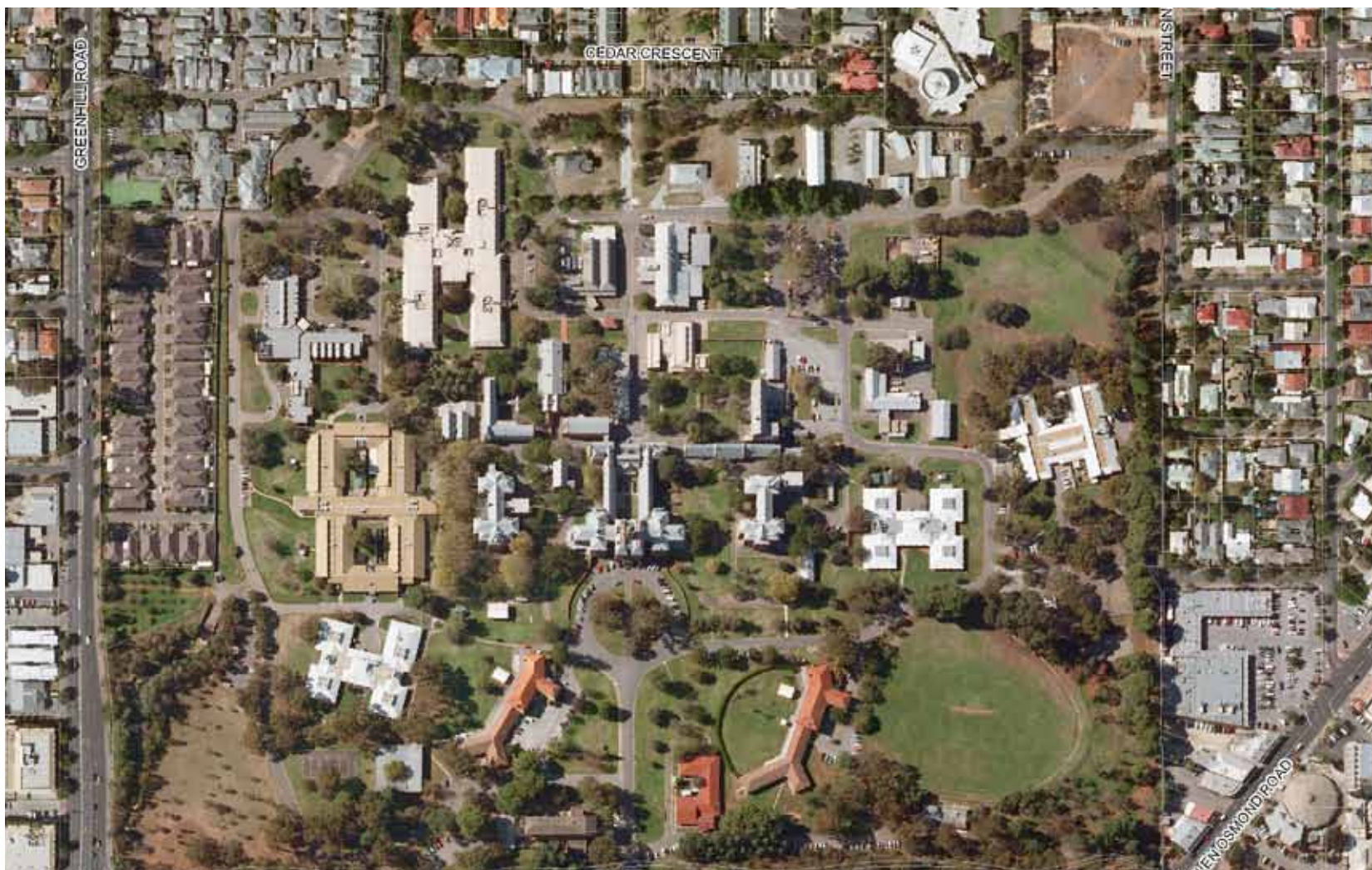
Site Analysis Tree Survey

The Glenside Campus Redevelopment Master Plan April 2008 identifies a coordinated strategy for redevelopment of the Glenside Campus. The plan is the outcome of extensive consultations with direct stakeholders, external stakeholders, interested parties and the general public.

The strategy involves organization of the site into 5 precincts. Precinct 1 in the Master Plan is dedicated to the creation of integrated health facilities covering mental health and substance abuse.

Key Design Principles for the new Health Facilities are:

- Provision of modern health facilities as a place of refuge, safety, security and healing
- Facilitation of demystification, destigmatisation, autonomy and integration
- High standard of aesthetic quality in a park-like setting
- Flexibility & adaptability
- Ecological sustainability
- Accommodation of diversity



Existing Glenside Campus



# The Site Configuration: Options



Glenside Campus, Adelaide



Blackberry Hill Hospital, Bristol, UK :  
Frederick Gibberd Architects



Wandsworth Recovery Unit, London, UK :  
Medical Architecture

The South Australian Specialist Health Services brief's aim was to bring together a number of key mental health and drug and alcohol services onto one site including units for acute care, rehabilitation, drug and alcohol withdrawal, and perinatal inpatient and outpatient services for clients from South Australian country regions and the eastern metropolitan Adelaide region. This enabled a pathway of care between mental health and alcohol and other drug clinical services to be optimised and delivered in a coordinated way. It also provides opportunities for a flexible and diverse workforce with a unique mix of skills and experience. An opportunity was taken to create a new benchmark facility in Australia with international credentials, though the implementation of a new and innovative model.

The first stage in development of the design concept was a series of workshops with key stakeholders. In these workshops, a range of precedents and options were presented to the participants for discussion, evaluation and comment. The information presented included urban design analysis of the campus & alternative models of site organisation with examples of other health facilities.

## 1. Campus

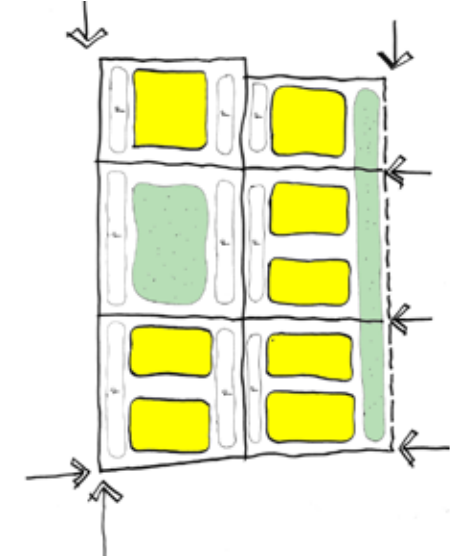
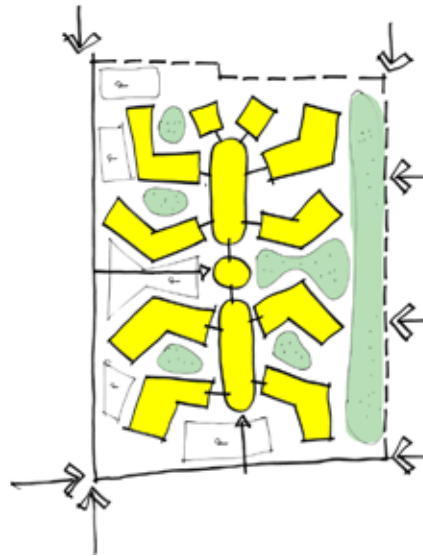
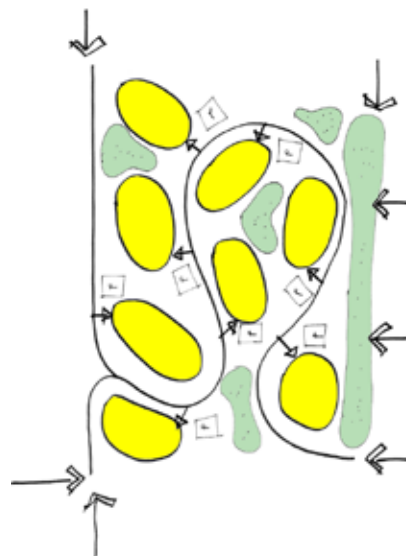
- Building islands
- Permeable
- Everyone has a front door
- Fragmented green space / communal space
- Large buildings

## 2. Complex

- Aloof from community
- Large scale building
- Impermeable
- Single controlled entrance
- Dispersed green space

## 3. Urban

- Grid and extension of suburb
- Street scene
- Integrated into community
- Own address
- Higher density
- City park





Angell Town, London, UK : Greenhill Jenner Architects



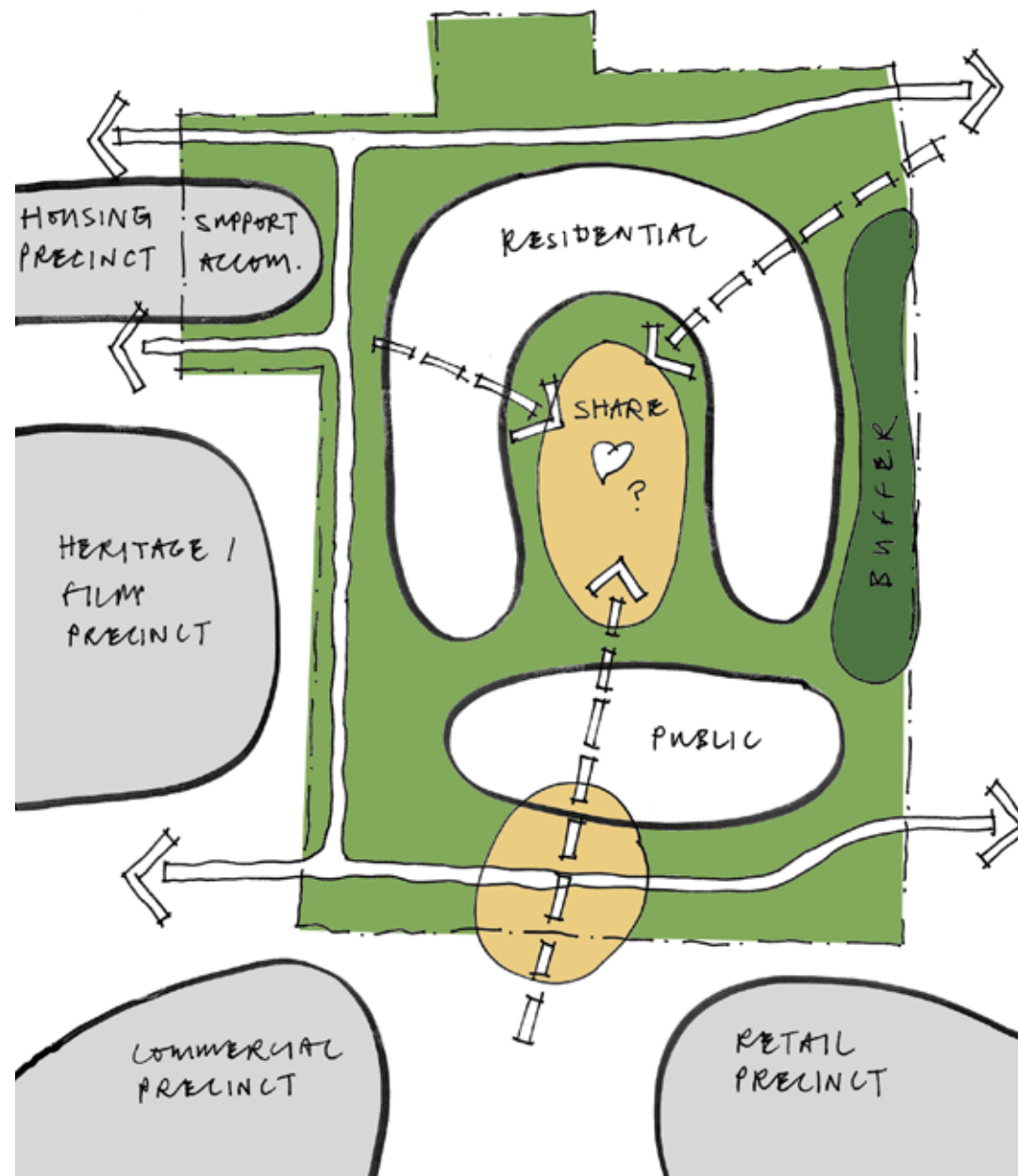
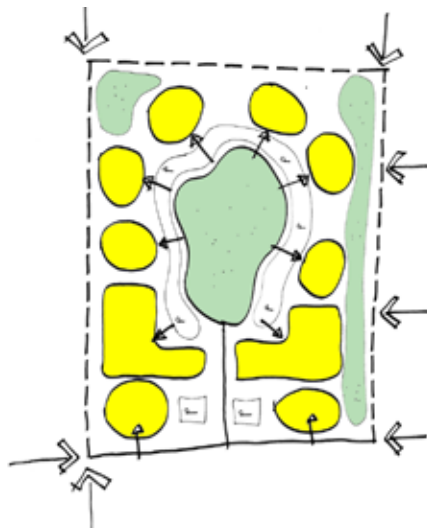
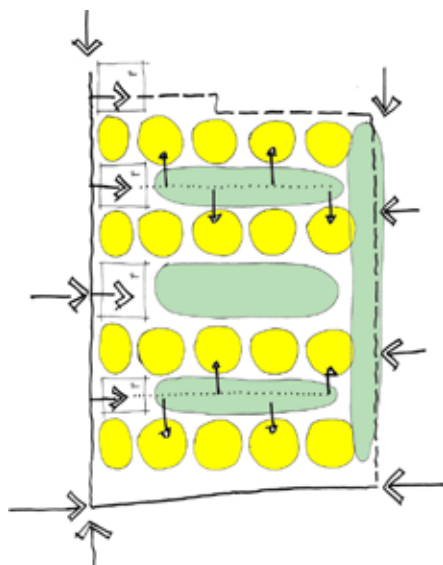
Roseberry Park, Middlesbrough, UK : Medical Architecture

**4. Villa**

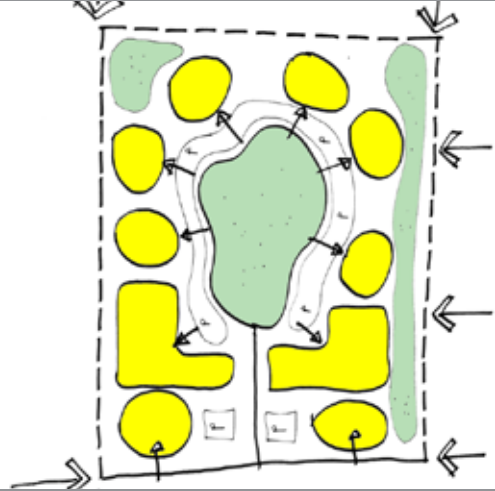
- Defined green space
- Shared communal areas
- Domestic building scale
- Public frontage
- Private back of house / estate

**5. Village**

- Dispersed local parking
- Everyone has a front door
- Front and back to buildings
- Domestic scale
- Shared village green space / communal space



# The Village Model

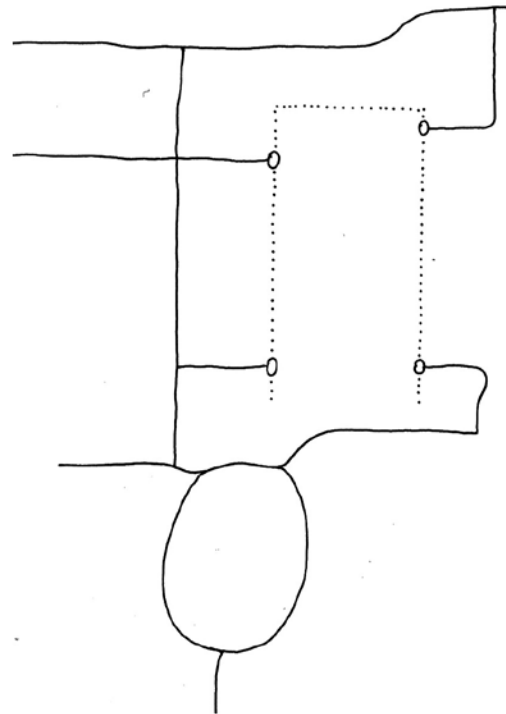


Roseberry Park, Middlesborough, UK : Medical Architecture

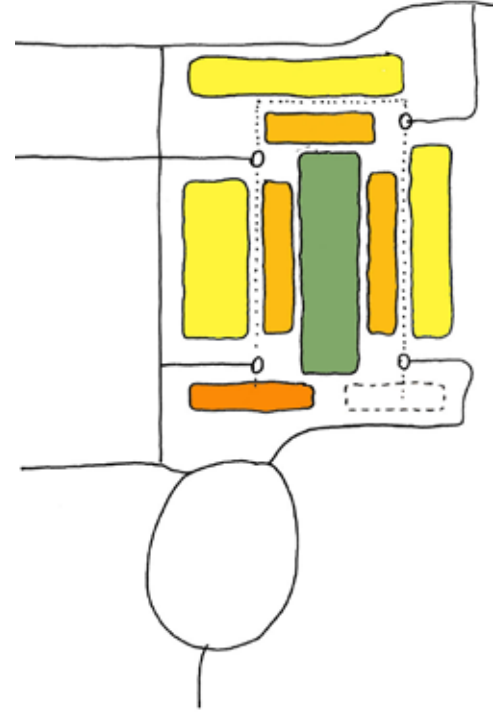


A strong preference was expressed among stakeholders for the new integrated 129-bed health facility to be arranged in a 'Village' configuration whereby a number of separate buildings are arranged around a common shared garden.

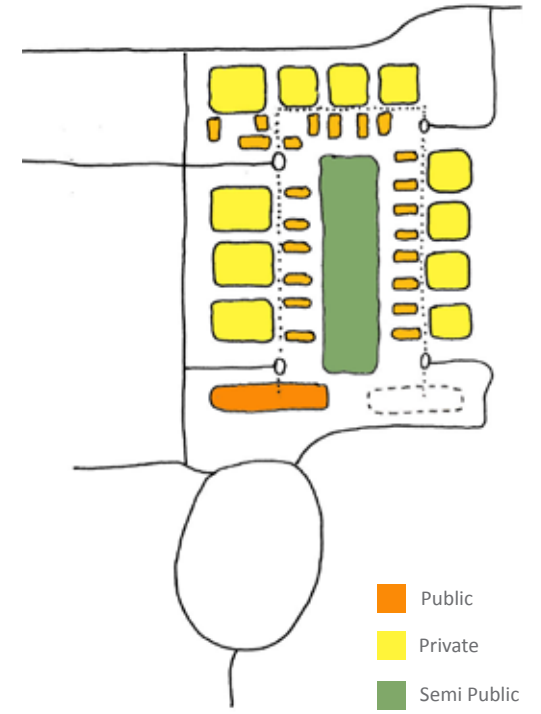
The facilities are designed with a strong relationship to the adjoining public realms to promote demystification and destigmatisation. They are configured for flexibility, and to provide a gradient of privacy and security for consumers, to foster autonomy and support a recovery focused model of health care.



Site Circulation Concept Diagram



Zoning Concept Diagram



Building Articulation Concept Diagram

- Public
- Private
- Semi Public
- Semi Private

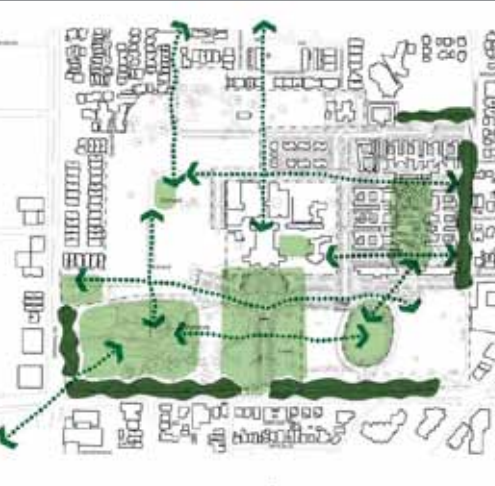
Achieved to a high standard of aesthetic quality in a park-like setting, a specific design response has been developed for each building type on the campus, with scale, construction and detail reflecting brief requirements. The inpatient facilities are configured as four separate residential style buildings; single storey, residential scale and using domestic construction methods. The Front of House building, more commercial in nature, accommodates administrative and educational functions.

Each inpatient unit is organised into clusters of 'Pods', consistent with widely adopted practice in Australia and overseas. Each pod is organised around its own enclosed garden, providing privacy and security without the need for extensive fencing.



Concept Sketch - Village Model

# The Master Plan



Edge definition



Water management swale



Spatial differentiation

The concept embodies the following responses to site conditions and brief requirements:

A Village Green has been provided that is open to the surroundings and preserves views through the site to significant trees and the Adelaide hills;

Legible building addresses have been developed as part of the public domain;

Public open space are linked to form a continuous series of spaces that are complementary to the adjacent Adelaide Parklands and in the same scale and of a similar urban typology to the open spaces in the nearby suburbs of Parkside, Glenunga, and Toorak Gardens;

Clear sightlines and connections have been developed to facilitate and encourage social interaction between new site uses such as the film and screen centre, residential, commercial and retail precinct;

Significant heritage structures including historical site axes have served as generators of layout and urban form across the site.



DA submission Site Plan, November 2009





Visualisation of Village Green Towards Front of House Building



# The Shared Garden



Seating opportunities



Passive shaded open space



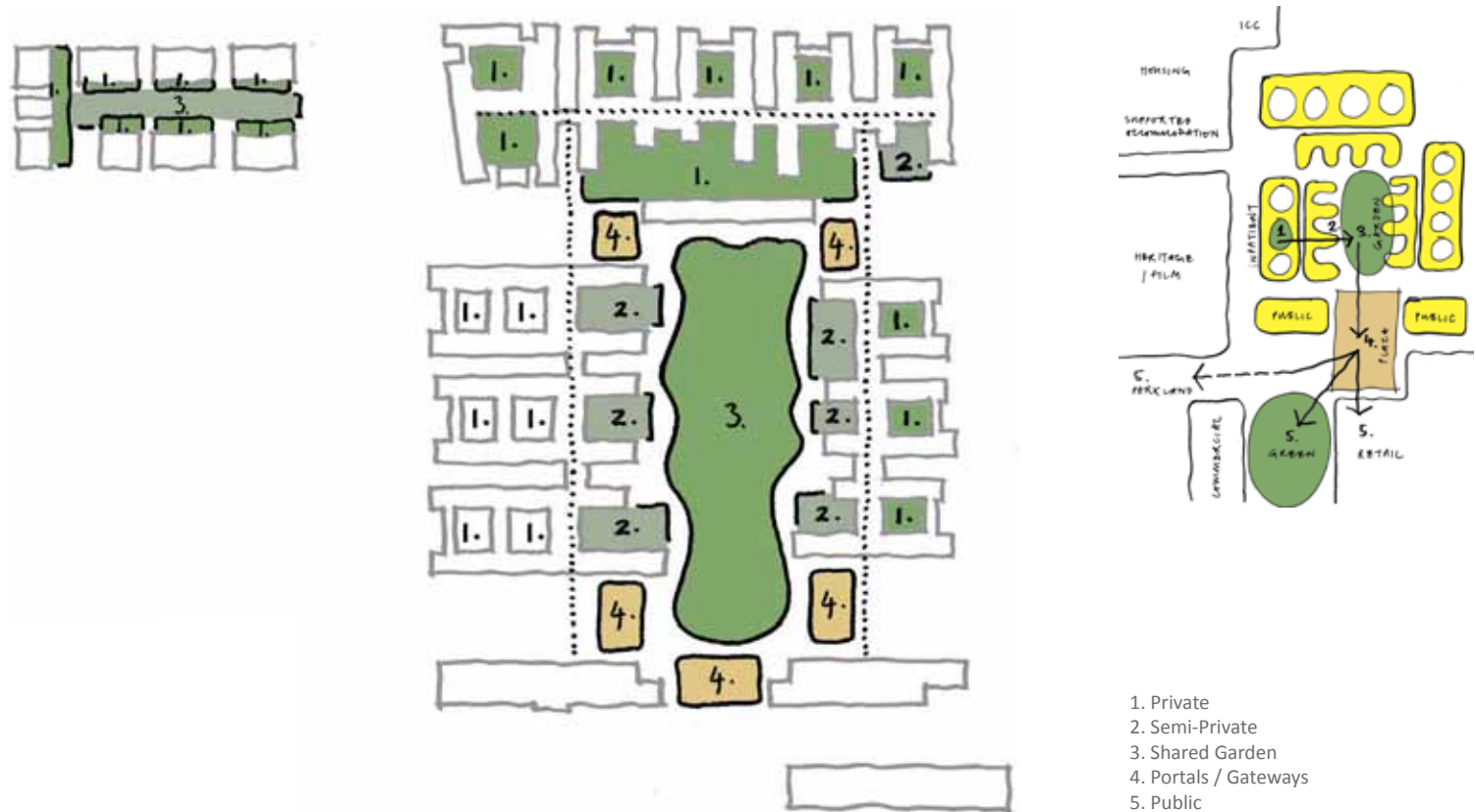
Activated space

The Shared Garden within the new health facilities site will function as a core passive open space for clients and consumers, health professionals and the general public who are using the health facilities. The generous space, approximately 140m x 60m in size, enables the configuration of a range of semi private gardens and communal open spaces that reinforce the healing values of the space. To promote use by the general public the potential for establishing future community gardens has been included in the design.

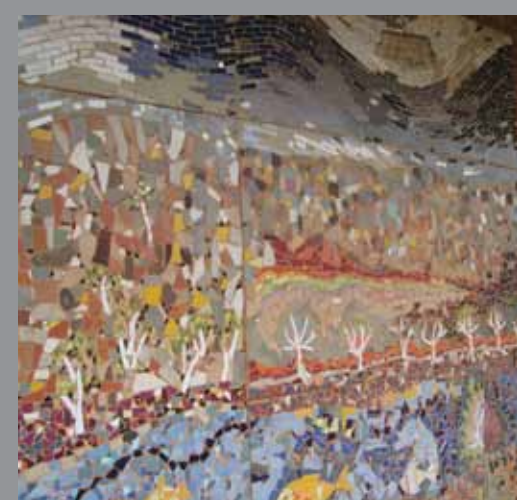
The Shared Garden offers the opportunity for group gatherings and outdoor events as well as spaces for quiet contemplation and 'park bench therapy'.

Quiet, discreet landscaped gardens will be incorporated within each of the health facilities' pods, for the exclusive use of clients, consumers and their visitors. These will be designed as healing spaces and will accommodate the therapeutic needs of consumers.

Public Art is provided in landscaped areas to further enhance the semi-private and public domain.







User Group Consultation

The process of developing the design concept was founded on comprehensive user consultation commencing November 2008. The principle method of consultation has been a series of interactive workshops with user groups encompassing staff, consumers and carers at all levels of seniority. The design's evolution and its endorsement is based on feedback from these workshops.

The new model of care was tested through the enablement programme of temporarily relocating in-patient services to refurbished buildings that also allowed the release of land to build the new health facilities. The design's evolution was influenced by the project evaluation of the enablement programme and the occupation of the first phase to the health facilities.



Team Event

# Environmentally Sustainable Design



Natural Ventilation & Passive Solar Warming



Rain garden



Operable Shading

Glenside is an urban development demonstrating leading practice in sustainable design and construction.

Initiatives being implemented to optimise energy efficiency, reduce greenhouse emissions and enhance the ecological value of the campus include; sustainable building designs to deliver an improved indoor environment and contribute to a healthy building; drought tolerant landscaping, water harvesting and water sensitive urban design; renewable power generation; and recycling and reuse of waste generated during construction.

The design currently is poised to set a new benchmark in sustainability in real performance rather than theoretical star rating of the design which can be all about "points".

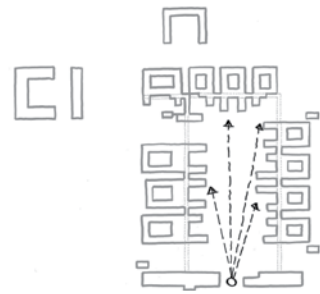
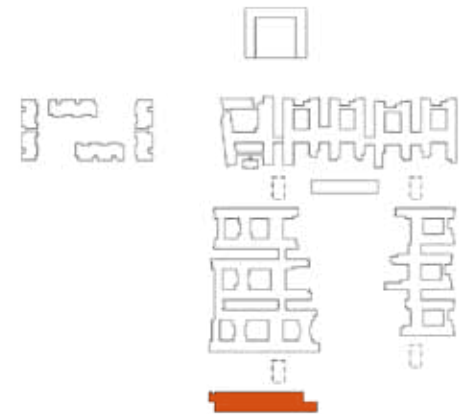


Overland swale

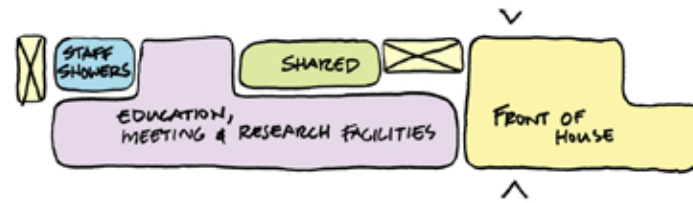


Drought Tolerant Planting

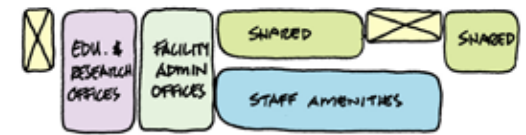
# Front of House



Wayfinding



Ground Floor Bubble Diagram



First Floor Bubble Diagram

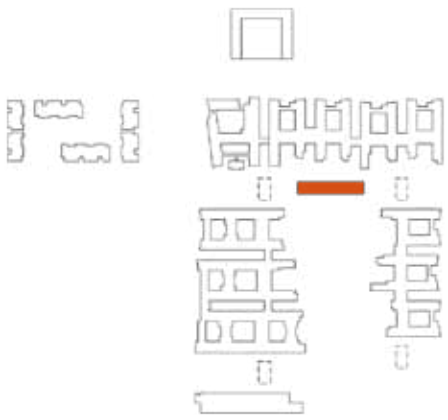
The Front of House building forms the first point of contact for visitors presenting the welcoming public face of the Health Facility for the local community as it overlooks the public village green. The building will form an interface between the public and more private realms and engage with the proposed new retail and commercial precincts. From Front of House each of the inpatient units can be reached intuitively through the shared garden.

A formal landscape setting has been created for this building reflecting its public nature.

Whilst administrative and non-core inpatient staff are based here the major focus of Front of House will be to provide educational and conference facilities with complementary public facilities including a café, providing a perfect place for meeting consumers and clients, visitors and staff. A gallery-type space has been created in the building's foyer, providing the opportunity to exhibit works of art and Glenside's historical items of interest.



# The Shared Activity Centre



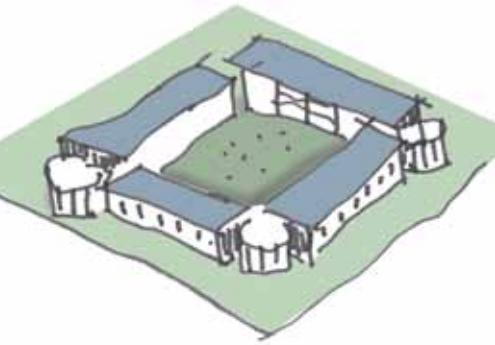
A building designed to promote the sharing of inpatient activities the Shared Activity Centre contains the performance and fitness suite, art, group rooms and the multi-faith room.

Designed as a garden pavilion, it is located in front of the Specialist Rehabilitation Services inpatient unit. This creates a buffer to the more public shared garden but still allows secure access for their clients. In addition it provides a more public presence to the wider realm with access available for the other inpatient units and potentially the wider community to the activity spaces. The generous covered terrace overlooking the shared garden encourages activities to spill outside. The new gym will be complemented by a network of paths through the shared garden and beyond to the community parklands.

Multiple entrances allow flexible use by different groups of consumers and clients. The foyers themselves provide an opportunity for a gallery of consumers and clients artwork.



# Buildings Without Fences



Existing Glenside Campus



Roseberry Park, UK : Medical Architecture



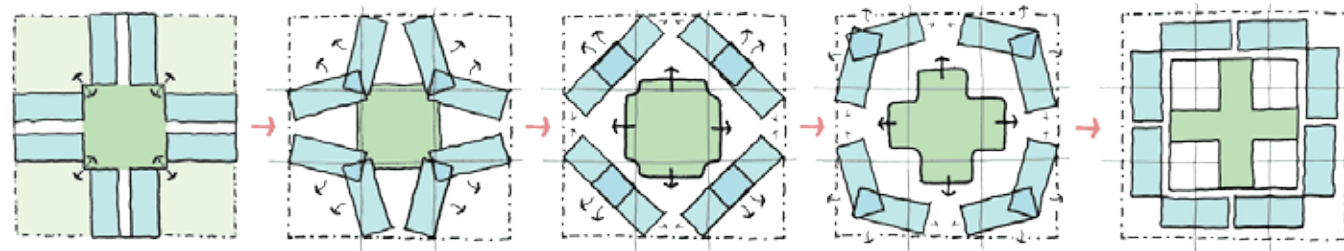
Rose Lodge, Newcastle-Upon-Tyne, UK : Medical Architecture

Traditional inpatient units result in bedrooms that are disaggregated with no flexibility between bed areas and a centralised day space with potential restricted outlook. Internal corners are difficult to plan and dead end corridors compromise security and safety. Dispersed outdoor space is difficult to observe and privacy in bedrooms compromised.



Linear Plan Types With Central Staff Bases

Many of the existing inpatient buildings at Glenside Campus are arranged around a traditional plan: the building is deep-plan with rooms either side of a corridor and gardens are located around the building perimeter, enclosed by fences.



Morphing Into A Building Without Fences

The same accommodation can be achieved by placing bedrooms at the perimeter to form a protective edge while integrating gardens into the heart of the building. This can produce a more flexible layout, while introducing greater levels of natural light into the building and increasing views outwards.

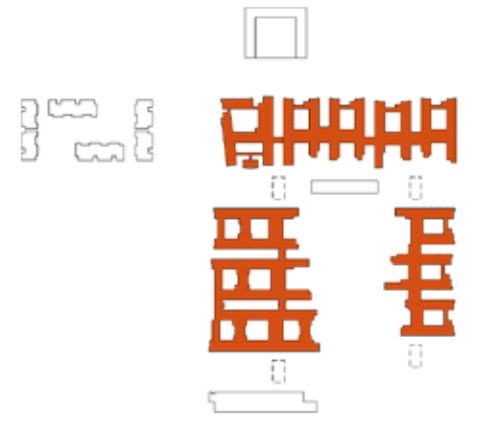


Introducing Secure Outside Space Within The Building Footprint





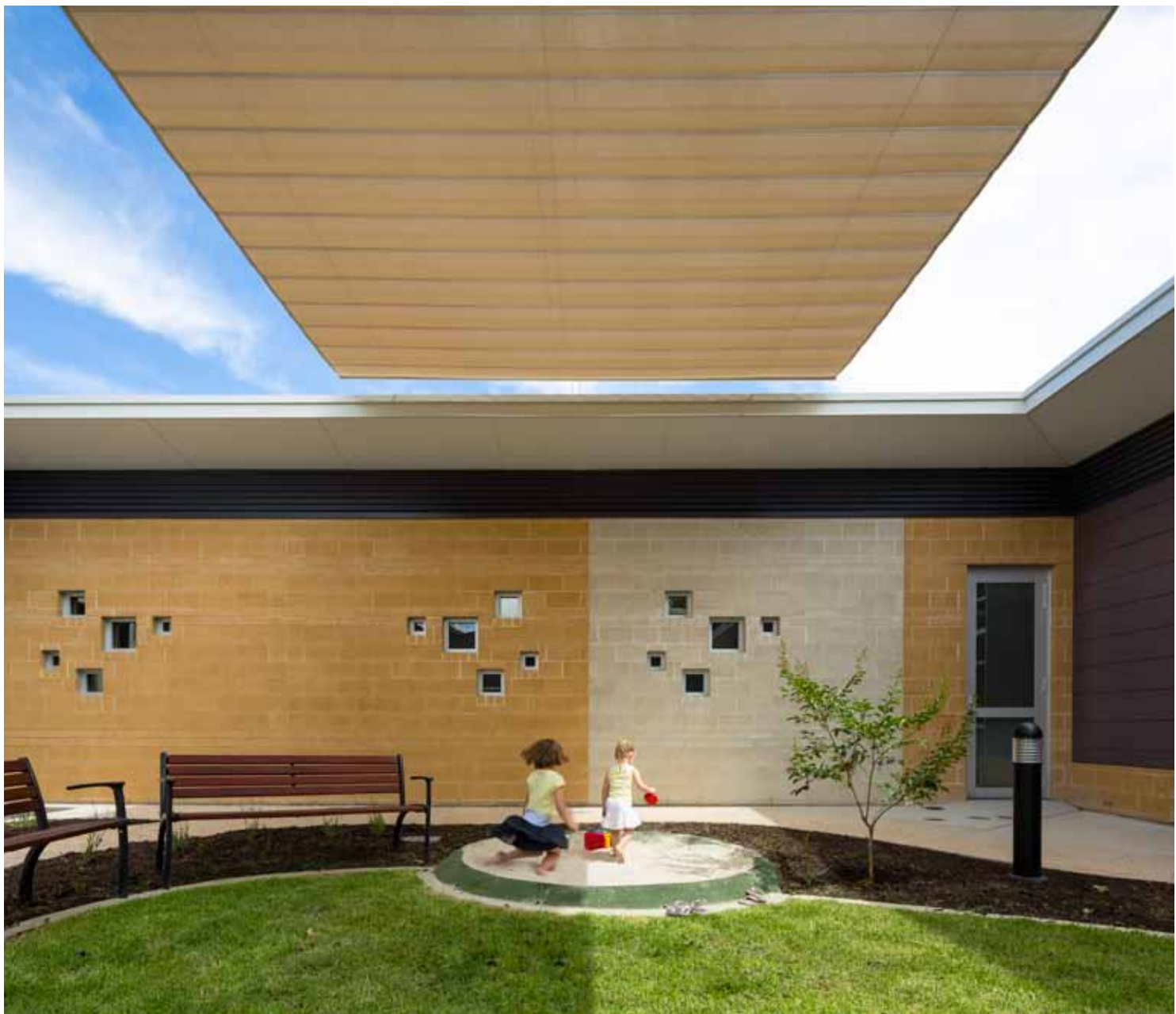
# Inpatient Units



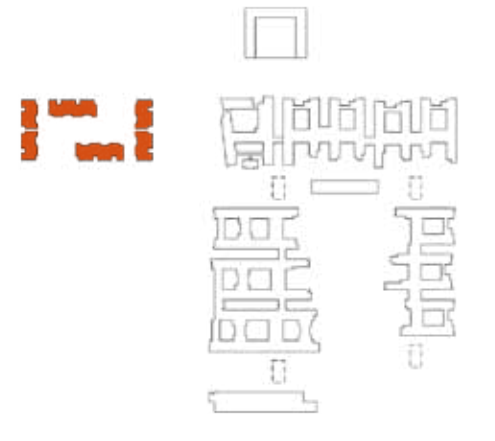
Developed with clear zoning, all inpatient units are designed using the same concept model: a series of pods contain the 'private' on-ward accommodation with the creation of secure & private gardens using the building form. The pods are linked by a 'mall' off which shared activity spaces are accommodated, acting as the 'public' face of the building and providing flexible generic accommodation.

The following principles are employed:  
Creation of secure & private gardens using the building form;  
Bedrooms are located along the perimeter of the building;  
Main day spaces look out on to the garden with more discreet day rooms located around the outer edge with views beyond the health facilities;  
The mall acts as an internal 'street,' connecting entrances to the pods and the shared spaces such as the main entrance and support accommodation. The junctions between pods are exploited to create gathering and shared spaces;  
Shared 'public' accommodation is located in a series of 'fingers' off the mall defining a sequence of external spaces between them.





# Supported Accommodation



Supported Accommodation takes the form of 20 self-contained single bedroom dwelling units arranged around a central garden area. An administrative unit provides office and overnight accommodation for support staff, and is configured to match the residential units in appearance.

The facility is designed to present normalised accommodation, consistent with residential development expected to occur on the adjacent precinct. The units are grouped in clusters of 3 to 5 so that the overall scale of the development is consistent with conventional housing. Each unit is designed to be easily maintained and managed by a single person, while being large enough to accommodate overnight guests in the living area.

Individual private landscaped courtyards are complemented by a communal garden within the heart of the site, furnished with BBQ facilities and sheltered seating.



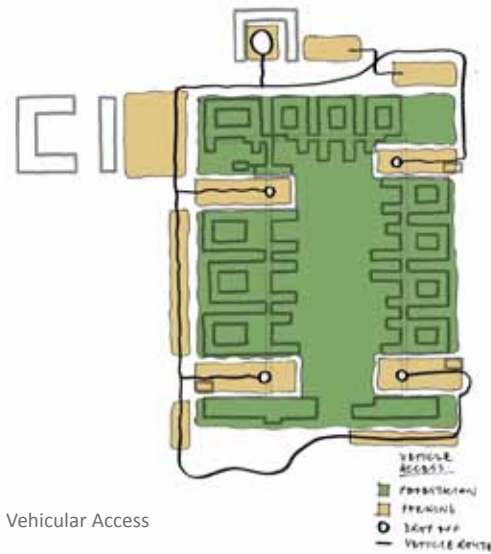
# Facilities Management Hub



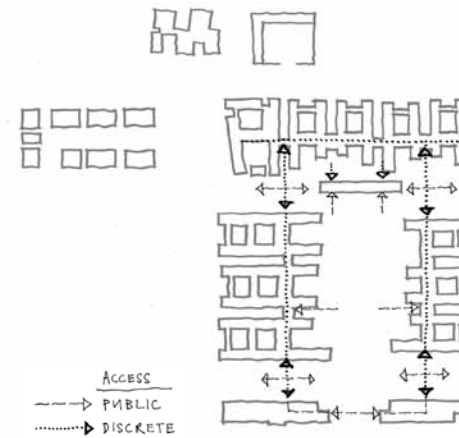
It was endorsed from early concept discussions to create a centralised facilities management hub containing Supplies, Food services, Maintenance / Engineering services, Environmental and Waste Management as well as the main IT support for the new health facilities.

Located to the rear of the site in the NE corner, this location distances FM activities from inpatient services and the public face of the health facilities. The sequence of construction confirmed the FM hub location due to its need to be up and running before any new inpatient facilities are complete.

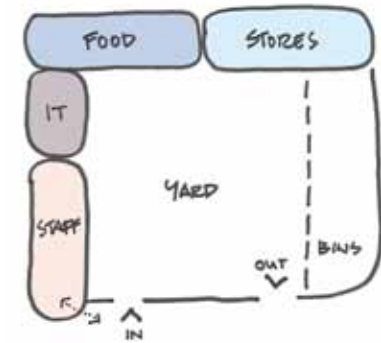
Clear FM routes have been established to all units separate from their main entrances, clients and consumers for discreet delivery / pick-up.



Vehicular Access



Access Points To Units



Zoning Bubble Diagram



Facilities Management Hub frontage



“We believe the design and delivery of new benchmark mental health and substance abuse facilities should not only support and enhance the operational aspirations but should also respond innovatively to the broader social inclusion agenda.....by providing a sustainable, socially integrated environment, that redefines the notion of **sanctuary and asylum**”

The Design Team Medical Architecture / Swanbury Penglase



**swanbury penglase**

244 Gilbert Street  
Adelaide SA 5000  
Australia  
Ph: +61 8 8212 2679  
swanburypenglase.com

Medical  
Architecture

157 Brougham Street  
Woolloomooloo  
Sydney NSW 2011  
Australia

4 Gee Street  
London EC1V 3RS  
United Kingdom

Ph: +44 20 7490 1904  
medicalarchitecture.com

Medical  
Architecture



**swanbury penglase**  
*architects of human space*