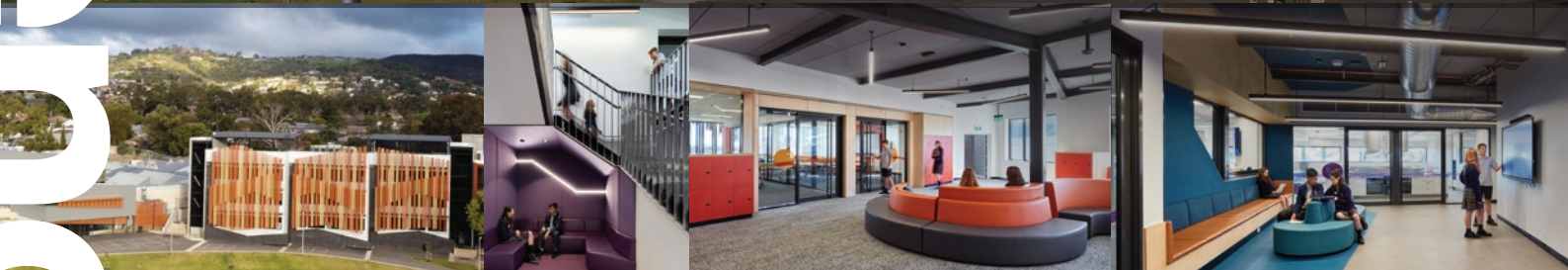




## Swanbury Penglase

**#88** 2022 is wrapping up and what better way to round it out than a look at our recently completed Norwood International High School!

# Site Notes



### Norwood International High School

Transforming environments is obviously our stock in trade, however we only occasionally get the opportunity to be involved in something as comprehensive as the transformation of the Norwood Morialta Magill Senior Campus.

The project arose from the merging of Morialta Middle School into the campus, taking the total site student population from 850 to over 1700.

The work involved a substantial redevelopment of almost everything on the site and construction of two new buildings: a three storey Middle School Building (complete with top level roof deck), and a two storey Innovation Hub (technical studies, music, art, food technology).

The scope also involved the repurposing of an underutilised 'cafeteria' space to provide a dynamic new Learning Hub, located centrally within the School, bringing together learning support, library services and IT support.

Other areas of redevelopment across the site included new Administration workspaces, classrooms, break out areas, and new Middle School laboratories.

Site works included new landscaping to address opportunities for both outdoor learning and play spaces, five sports courts and a new carpark.

An entry statement to the site was also developed with a new lift, glazing, carpark, landscaping, and signage to recognise its new name, Norwood International High School.

All of this work was carried out while the school remained fully operational! At the official opening, students commented on how familiar they had become with sounds of machinery, power tools, concrete cutting and hammers!

The collaborative approach adopted by all involved – the School, contractor Lendlease, the Departments for Education and Infrastructure as well as the entire design team was exemplary; a demonstration of how a vision for a project can be achieved with a shared common goal and 'best for project' mindset.

It was a privilege to play a key role in the substantial re-envisioning of an entire School campus and the cultural and physical changes involved. We are proud of this significant project achievement and have enjoyed watching the students and staff making good use of their new facilities.



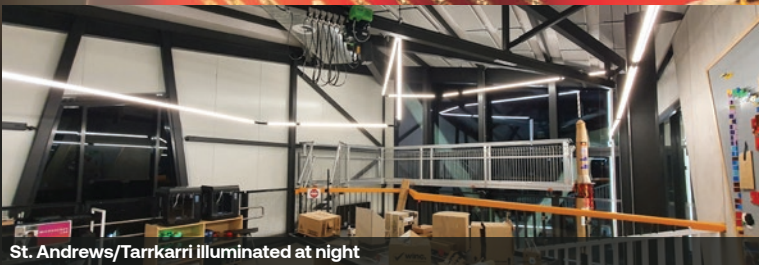
Exterior view of St. Andrews/Tarrkarri



Official opening of St. Andrews/Tarrkarri



Lana, Marguerite and Fiona



St. Andrews/Tarrkarri illuminated at night



Steph and Matt



Jas and Steve



Ted and Stefania

## Office News

It's hard to believe another year has almost passed by since our last Christmas Party, but we are immensely looking forward to this year's festivities. They will be held at Grunthal Brew in Verdun and include a stop off at Norwood International High School for a site visit.

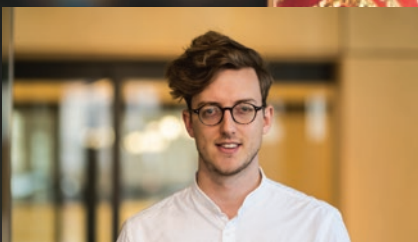
It's been a very busy couple of months for St. Andrew's School with many successes to be celebrated. Back in October, St. Andrew's picked up a Commendation at the Illuminating Engineering Society awards night. Senior Associate Zoe Avon played a key role in the design and credit also goes to Lucid Engineers, Insight Lighting and Integrated Electrical for realising the concept. On top of this, St. Andrew's Collaboratory received a Commendation at the 2022 SA LEA Awards. On Friday the 25th of November, the School which has been given the Kauria name **Tarrkarri**, had an official opening, conducted by Member for Adelaide, Lucy Hood. Other attendees included the St Andrew's School Board and Foundation and Town of Walkerville Mayor Melissa Jones.

Congratulations to Graduate of Architecture Steph and her partner Matt who were recently engaged on the 22nd of September, in Port Lincoln. Wedding season is well and truly in full swing, with two of our staff recently saying 'I do!' Congratulations to Architect Ted and his wife Stefania, who were married at Vigna Bottin Cellar Door on the 22nd of October, and travelled to Hawaii for their honeymoon. Best wishes also to Associate Jasmine and her husband Steve who recently married on the 19th of November at Barn 1890, Sellicks Hill, jetting off to Fiji afterwards for their honeymoon.

A little while back, we had two new staff members join our team. Welcome to Graduate of Architecture Daniel Butcher, who is part of the heritage team, and Interior Designer Cassie Feng!

Congratulations to Marguerite Bartolo, Lana Greer and Fiona Doman who were awarded their Registered Memberships with the Australian Institute of Landscape Architects. They are now officially Registered Landscape Architects – a significant achievement in their professional careers and a well recognised title within the industry.

On behalf of Swanbury Penglase, we would like to wish everyone a safe and happy festive season!



## Staff Notes

**Name:** Gabe Lever-Brine

**Position:** Graduate of Architecture

**Current projects:** Tasman Medical Centre, Tonsley Western Plant, Moonta Mines Museum

**What inspires you?** Passion

**Design idols:** My friends at work

**Design you wished you could take credit for:** Rivendell

**Pencil vs computer (your preference):** Save the trees!

**Most treasured possession:** Hue (Cat – M) and Trevor (Dog – F)

**Best thing about living in Adelaide:** In the voice of Jim Carey's Grinch – "I don't know why I'd ever leave this place, I've got everything I need right here."

**Fantasy (or next) holiday destination:** Anywhere but here

**First favourite song as a kid:**

Thomas the Tank Engine Theme Tuuuuue

**Currently listening to:**

Casefile's Murder Podcast

**Superpower (if you could have one):**

Immortality

**Fav eatery:**

The frozen section at the supermarket. Times are tough.

**Growing up you thought you would be:**

Famous

**Memorable SP (Swanbury Penglase) moment:**

The occasional unsolicited officewide email